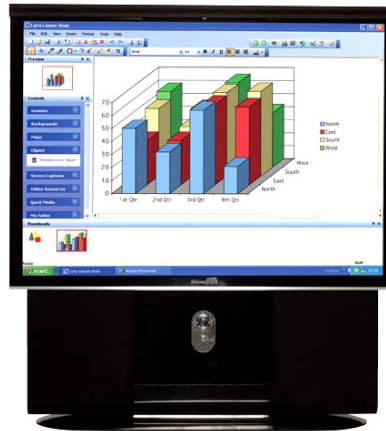


REAR PROJECTION INTERACTIVE WHITEBOARD

The
Partnership
For
Success

www.oakforduk.com



Features

- > 60" Rear projection Interactive cabinet with integral TV and speakers
- > Durable toughened surface
- > Interactive touch-screen technology
- > Switch between IWB and TV just by changing the channel
- > 10,000 hr lamp life
- > Aspect Ratio 4:2.8
- > Can be set up to concurrently run PC, DVD, Video and Microphone
- > Interactive Whiteboard Software Included
- > USB 2.0
- > 2 year on site warranty
- > 1 year Lamp warranty
- > 1420 (h) x 1306 (w) x 596 (d) mm
- > Weight 89kg

A full range of installation, training and support services are available. A pre-installation site survey is highly recommended.

If you would like more information or wish to discuss how it could fit within your organization please contact Oakford Education on the details above.